

VIDA



VIDA

BIOARCHITECTURE, INSPIRED IN NATURE



A project set in a truly unique and authentic location, where nature becomes an extension of your home and an exceptional family lifestyle awaits.

Nestled in the heart of Sotogrande—one of Europe's most exclusive residential communities—Sotogrande S.A. and ARK Architects joined forces with a shared ambition: to create a masterpiece in perfect harmony with its natural surroundings.

The result is VIDA, a one-of-a-kind residence that seamlessly blends into the landscape, offering its residents an unparalleled sense of serenity, privacy, and security.

A **dialogue**  
with light and  
natural materials



THE  
PERFECT



V  
I  
D  
E  
O  
10



V  
I  
D  
E  
O  
11



LOCATION



ARK

## One of the most exclusive residential estates in Europe.

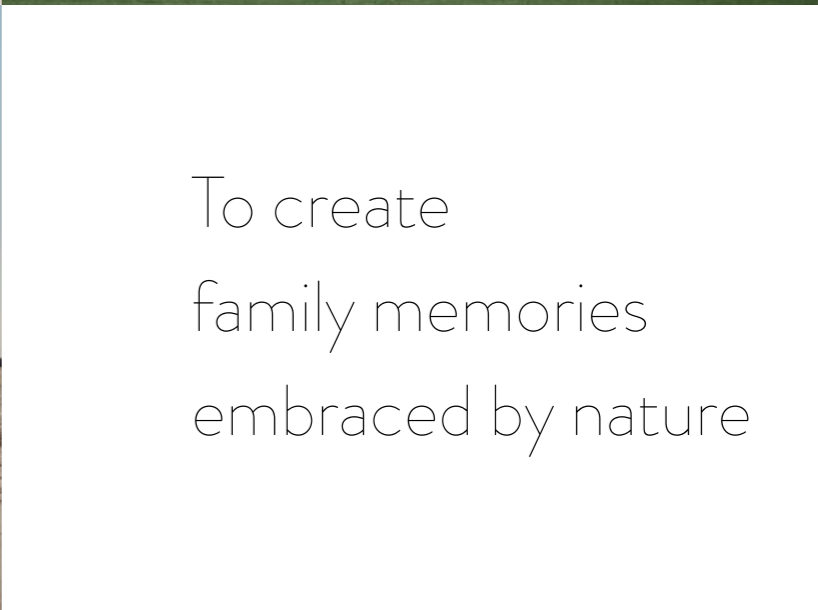
The Mediterranean Sea, the cradle of Western civilization, is today one of the most beautiful natural sites in Europe.

It has an exceptional climate of eternal summers and mild winters, sun almost every day of the year and an almost infinite extension of soft sandy beaches and impressive coves.

Established in 1962 on the western side of the Costa del Sol in Andalusia, Sotogrande starts from the Mediterranean Sea and climbs up to the foothills of the Sierra Almenara mountain range. Famous as a golfing destination, with world famous courses such as La Reserva Club, Real Club Sotogrande and Real Club Valderrama, the estate is a paradise for sports lovers with facilities for world class polo, tennis, sailing, and water sports for all ages.

A true gem overlooking the Mediterranean Sea.







The 15

V I D A

La Reserva Club

Polo

Sotogrande International School

Sotogrande Sport Harbour & Marina

Real Club de Golf Valderrama

Real Club de Golf Sotogrande

SO/ Sotogrande Spa & Golf Resort Hotel

# SO/ Sotogrande Spa & Golf Resort Hotel

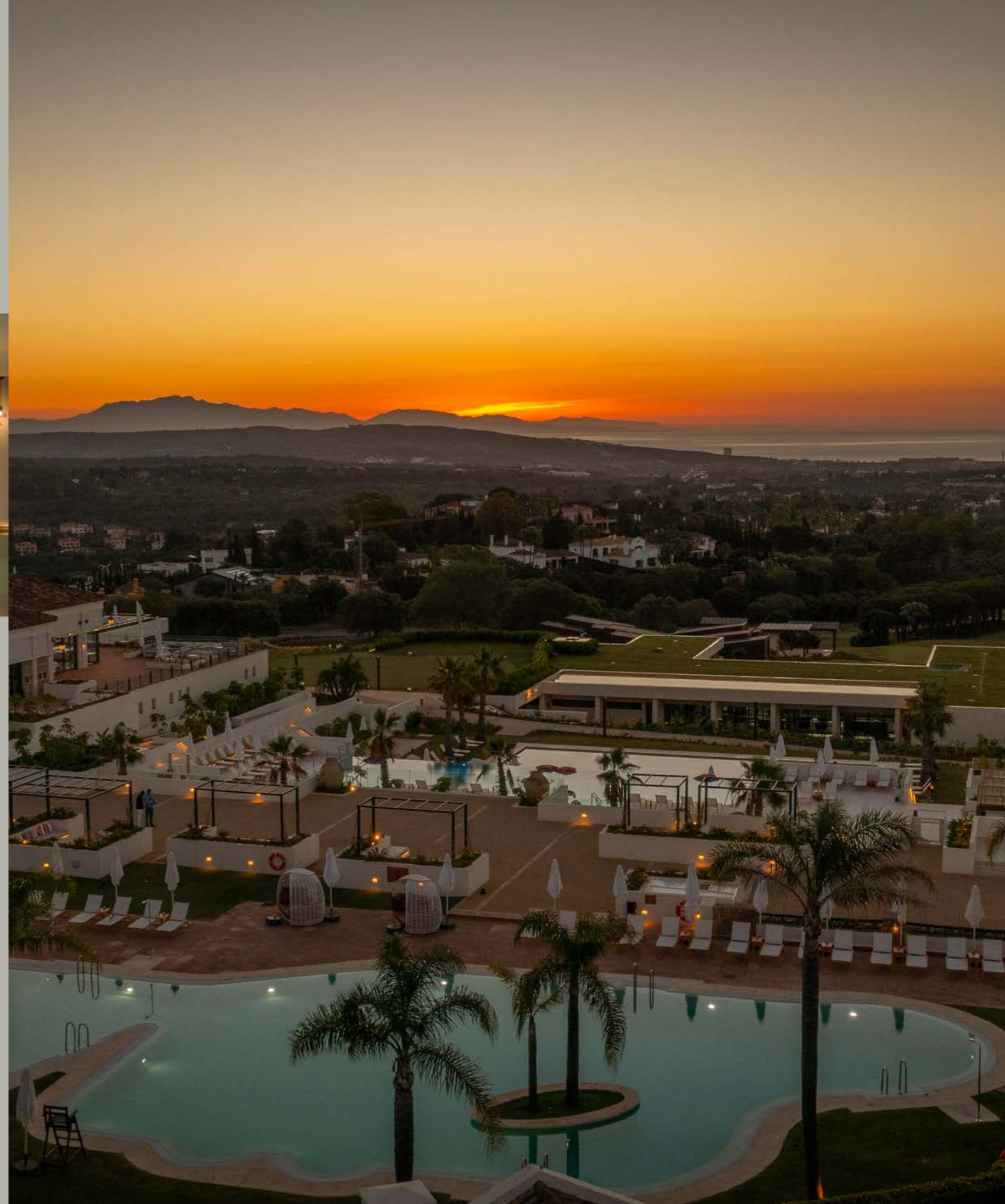
Hidden away in the Andalusian countryside, live life the Spanish way for a family holiday, golf weekend or spa break at this stylish 5-star lifestyle and wellness retreat.

For a getaway and a taste of diversity, a blend of the deepest Andalusian tradition and at the same time a sophisticated ambience, the SO/ Sotogrande Spa & Golf Resort Hotel is available to residents of La Reserva.

The gastronomic options range from Andalusian cuisine at Cortijo Santa María 1962, artisan cocktails at IXO Tapas & Bar, barbecue flavours at MarXa Chiringuito and a sense of golf camaraderie at Society Clubhouse.

The sophisticated and versatile facilities of SO/ Sotogrande Spa & Golf Resort Hotel boast an intense activity: golf tournaments, gala dinners, welcome cocktails, meetings, conferences are held throughout the year.

Try one of the signature treatments offered by Spa & Wellness Club Sotogrande, enjoy the indoor pool, hydrothermal circuit and stay in shape at the 24/7 gym.





## The place to be

La Reserva constitutes the newest among the four districts that compose the Sotogrande estate. Capitalizing on the rich heritage of this destination, La Reserva provides an ideal “private retreat” tailored to like-minded families.

Encompassing a sprawling 650 hectares, it presents discerning families with an idyllic country club ambiance, allowing them to relish the things that truly matter. It reimagines the Sotogrande lifestyle through a select collection of private residences, offering their inhabitants a genuine sense of belonging.

This is a place where you can reconnect with yourself and your loved ones, offering the perfect place to live, relax, recharge your batteries and bring up a family, with everything you need on your doorstep.





Sotogrande International School

SO/ Sotogrande Spa & Golf Resort Hotel

Trekking

Tennis

School

Golf course

Runnig

Cycling

Driving range

Beach Club

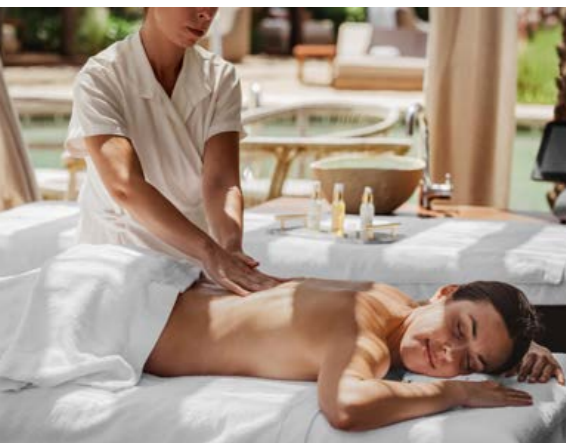
SPA

Restaurant

Hotel

Bar

Shopping



## Life, exactly as it should be

Our commitment lies in ensuring that we attend to every detail on your behalf, allowing you to wholeheartedly savour your time in Sotogrande.

La Reserva Club, as well as cutting-edge amenities for your family's pleasure. Beyond golf and tennis, you'll find The Beach, featuring a restaurant and wellness facilities.

The Golf, Tennis, paddle, hiking, biking and water sports facilities, all nestled within nature and greenery, provide a one-of-a-kind setup not seen anywhere else on Spain's coastline.

Privacy, panoramic views and low density, the key factors of the La Reserva Real Estate offer.

ARK

# 18 unique holes

La Reserva Club boasts one of the most impressive golf courses in Europe. The course, part of the World of Leading Golf network, features resident professional and Ryder Cup winner, Manuel Piñero.

Designed by the legendary Cabell B. Robinson, our golf course stands out for its wide fairways and fast greens, an irresistible challenge for accomplished golfers. The course is consistently ranked amongst the best golf courses in Spain.

At La Reserva Club, we know that golf is much more than a sport, it is a way of life. That's why we offer an exceptional golf experience that combines a passion for the game with the natural beauty of the surroundings.

*“La Reserva has a magnificent golf course, one of the best in Spain, it is difficult to find a place like this in the world, one of the qualities of La Reserva is to be located in the middle of the Mediterranean forest, surrounded by fantastic natural beauty”.*

Manuel Piñero.  
La Reserva Club Golf Ambassador





## The Beach

Experience the feeling of a pure beachfront, in La Reserva, in the middle of nature.

The Beach is a spectacular facility, designed to recreate a white sandy beach surrounded by nature. A magical place where you can enjoy the breeze, tranquillity and where fun and adventure blend in harmony.

The facilities at The Beach represent a great advantage for the residents. Space for a sophisticated and relaxed lifestyle, in harmony with nature, literally on their doorstep.

Plan a day full of sensations.

The white sandy beach, the jewel of The Beach, is a family space very close to home where children will enjoy like never before. A haven of sand and sun that offers unforgettable moments for the whole family.

The club boasts a 17.000 m<sup>2</sup> long sports lagoon, perfect for a wide variety of water sports. Paddle surfing, wakeboarding...

And a magnificent heated swimming pool with all the facilities to enjoy a real day at the beach, surrounded by terraces where you can relax in the sun and enjoy delicious cocktails.

In addition, our restaurant offers a wide variety of dishes so you can enjoy a perfect lunch or dinner.

A perfect beach day, where you will be able to relax and be spoiled while your children are having fun in our Kids Club.



# Tennis, padel and much more at the Racquet Centre

La Reserva Club is an exceptional place for sports lovers. We have the best quality facilities including clay and hard tennis courts, padel courts, football pitch and beach volley court perfectly maintained at your disposal.

You have no excuse if you need to improve your backhand or get started in the world of tennis, we have expert teachers who will help you perfect your technique, and if you are looking for a more intense workout, we have paddle courts where you can get fit while having fun.

Space for a sophisticated and relaxed lifestyle, in harmony with nature, literally on their doorstep.



# Culinary delights...

Eating at La Reserva is always doused in lashings of local flavour.

## Ancala. The Beach

Next door you'll find the achingly stylish restaurant at The Beach, which cleverly uses wood and light and a collection of natural earthy products. The menu comprises a healthy Mediterranean dishes.

Our innovative charcoal oven uses a special technique to ensure the perfect finish for grilled and roasted meats and fish.

## La Reserva clubhouse

Find authentic Andalusian cuisine with a contemporary European twist in our charming restaurant at the clubhouse. Expect locally sourced, seasonal ingredients to take centre stage on the menu.

## Chiringa

Chiringa, a standout feature located on the sandy beach, enhances the gastronomic offerings of 'The Beach.' It follows the cherished tradition of popular beach bars but with a twist, presenting a vibrant and relaxed culinary experience. Diners can indulge in mouthwatering smash burgers and artisanal pizzas, each crafted with care and a touch of culinary flair. Only in summer season.

## The Racquet Centre

You can combine sport and the pleasure of a revitalising break. The ideal place to get together with friends and continue enjoying your favourite sport in first class facilities.



15

THE FIFTEEN

One of the two projects within La Gran Reserva,  
the ultimate private enclave in the most exclusive  
surrounding in Sotogrande. The 15 offers its residents  
breathtaking views of the coast and beyond.





## A place that is truly yours

The location and orientation of each plot and villa, has been carefully designed to protect your privacy and deliver a unique escape in front of the Mediterranean Sea.

In addition, The 15 is one of the very few projects in Spain that are truly private, to be enjoyed by its owners and guests alone.

The 12 ha. area of The 15 has a fully protected perimeter.

The 15 residences will enjoy unique views and extensive outdoor areas that opens up to the Mediterranean Sea offering panoramic views of the stunning coast. Once built, our team will look after all details of your property, providing full peace of mind to residents who can simply enjoy their home and lifestyle.



# VIDA

BIOARCHITECTURE, INSPIRED IN NATURE



*“VIDA, surrounded by nature and in a private location, has its roots in the foundations of my architecture, which is humanist and born of a love for natural materials and their relationship with light. This passion for creating homes, with the people who will inhabit them as a priority, involves understanding the place, the orientation, the lifestyle, the relationship between spaces, and the powerful light we have in our area.”*

Manuel Ruiz Moriche,  
Creative Director ARK Architects

## VIDA - Merging with nature

Architecture coming to life, where nature becomes the soul of the house, feeding the senses. The integration of landscape and water in every detail, from their dancing reflections to their gentle melodies, is evident.

The vegetation unfolds lush and harmonious, welcoming the inhabitants as if nature itself were welcoming them.

Villa VIDA exemplifies this fusion with nature, using natural stone as the skin of the house, as the guiding element that reveals each space. Natural materials of the highest quality, such as stone, wood and vegetation, are masterfully treated to project nature into the interior of the house.

In this house, LIFE emerges as a fusion of elements where light acts as the master of ceremonies, ordering the layout of the spaces. Sotogrande is framed as what it is: a unique living space where the elements of nature embrace the architecture, offering unique views.

# Bioarchitecture is a constructed idea

V  
I  
D  
A  
38

A global solution combining nature,  
materials, experiences and passion  
for architecture.

Where light, nature, materials, sustainability and creative  
combine to create a unique symbiosis, generating an  
experience that stimulates our senses. That's where the  
ARK world emerges to create a unique architectural project,  
bioarchitecture created for people.

With more than 25 years in the sector, designing and  
building the dreams of our clients is what differentiates the  
villas of ARK Architects.

This is only possible because we control all the steps of the  
project: the location of the plot of land, design, architecture,  
construction management, landscape, and interior design.  
All in only one multidisciplinary company. This is the way to  
create our masterpieces villas all along Marbella, Zagaleta,  
Sotogrande, Miami, Abu Dhabi, New York and Milan.



# ARK

## values

Sustainable  
design



Handcrafted  
architecture



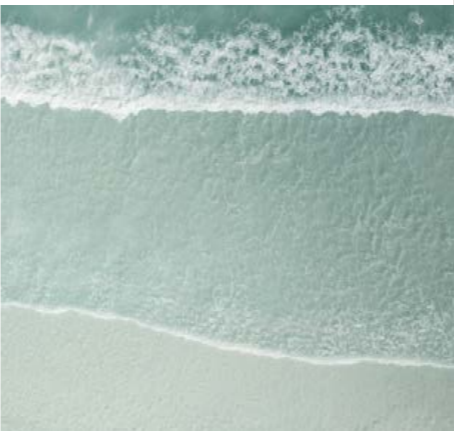
Custom  
home



Living in  
nature



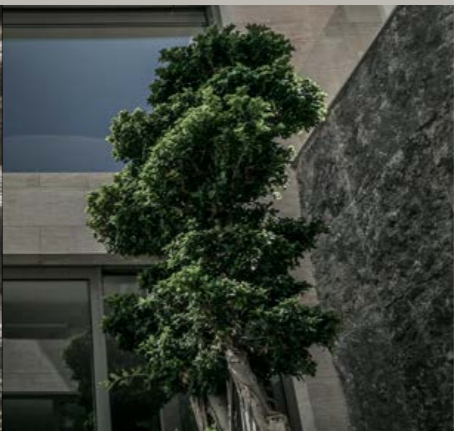
Natural  
connection



Natural  
materials



Life  
balance



Healthy  
living



# The views from VIDA

Mediterranean Sea

Real Club de Golf Sotogrande

Gibraltar

Real Club de Golf Valderrama

SO/ Sotogrande Spa & Golf Resort Hotel



# How do we get sustainable & healthy villas

VIDA adapts to your family's way of life, placing the comfort and quality of your lives at the heart of the project.

In the local natural environment, natural light is intense but softly covered by the surrounding nature. The connection with these elements is at the heart of our project, in which we have designed several courtyards as climatic spaces, used to control shadows, temperature and natural air ventilation, but also as spaces of use and joy. Bioclimatic spaces improve the quality of life.

We also introduced a ventilation system with heat recovery into the project, which is the optimal solution for energy efficiency and the provision of excellent air quality all year round.



Passive houses do not use polluting energy methods, such as burning fuel, to produce and create a comfortable room temperature. Thus, this type of construction discards the usual cooling/heating mechanisms and yet manages to maintain an indoor temperature of about 21°C every day.

To achieve this, VIDA has used a combination of aerothermal and photovoltaic capture technologies.

Two of the cleanest and most efficient techniques for generating electricity and heating and cooling a home. Not only do we contribute to the environment, but we also reduce the energy costs of our project. The aim is to achieve total efficiency and energy self-sufficiency of the house for most of the year.



“Inhabitants are at the heart of our vision, knowing that from the very first moment, the design of our spaces profoundly shapes the lives of their residents.

Our projects seamlessly connect nature, space, natural light, and individual lifestyles to create sustainable homes — this is our commitment.”

Manuel Ruiz Moriche,  
Creative Director ARK Architects

ARK

# The **garden** built to be sustainable

The combination of the design principles that govern ARK:

- Timelessness in forms and materials.
- Interrelation with nature, the environment and the beauty of the indigenous Mediterranean area.
- Energy sustainability and bioclimatic efficiency.
- Innovative, safe and environmentally neutral construction systems.

The philosophy of the project is to create a new way of experiencing everyday life, with sustainability and comfort as priorities.

Not forgetting the necessary attention required to create a unique object, an architectural form filled with elegance and impressive spaces.

- Natural ventilation. Natural air flow to minimise energy consumption.
- Highest quality building materials.
- Landscape design. We use landscaping elements to filter grey water.
- Indigenous and traditional plants. We reduce water demand.  
We preserve existing trees, maintaining the integrity and history of the site.
- Permeable surfaces. Reduce run-off, allowing water to percolate through the local water table and/or aquifers.



- Solar shading. Reduces energy needs.
- Daylighting. Minimises the need for artificial lighting.
- High efficiency lighting. Optimised lighting to increase energy efficiency.
- Alternative energy. We use technologies to reduce energy consumption.
- Villa orientation. Site analysis, to know exactly how the sun, wind and other environmental agents affect the spaces.



"We always develop properties with people at the forefront  
- conscious that the design and usage of space in a home  
should make its residents feel safe."

Manuel Ruiz Moriche,  
Creative Director ARK Architects



# N A T U R E

Redefining materials in search of purity, nature becomes architecture.

Finally, we go back to our roots. We go back to the nature that surrounds us, and which gives meaning to the architecture we build. And we go back to the courtyards, which teach us, from the Mediterranean tradition, the importance of attracting light and vegetation to our homes. Giving us light, ventilation, harmony, sounds and, in short, the beauty of simplicity.

This delicate harmony of materials: stone, wood, light and nature, is the key to generate a space rich in contrasts and comfort. Understanding luxury from the point of view of spatial freedom, sustainability, energy economy and, above all, the reunion with nature and tradition are what make this building much more than a house, it is timeless architecture, it is a home.



ARK

T S M  
H K A  
E I T  
R  
I  
A  
L  
S



Through the intelligent use of carefully selected materials and systems, we create a timeless environment for everyday living.



S  
T  
O  
N  
E

V  
E  
G  
E  
T  
A  
T  
I  
O  
N



The sensation of spaciousness and luminosity is all-encompassing.

Boundaries between indoors and outdoors fade away, rendering the space boundless.

The plant shapes bring an organic rhythm to the architectural composition, filling the space with pure life and constantly evolving forms.



W  
O  
O  
D

W  
A  
T  
E  
R



Wood infuses our interiors with warmth and comfort, offering texture and personality.

Light. Pure, white, natural. It's our life source. Devoid of light and its cast shadows, architectural spaces wouldn't exist-no volumes constructed to be enjoyed and inhabited.

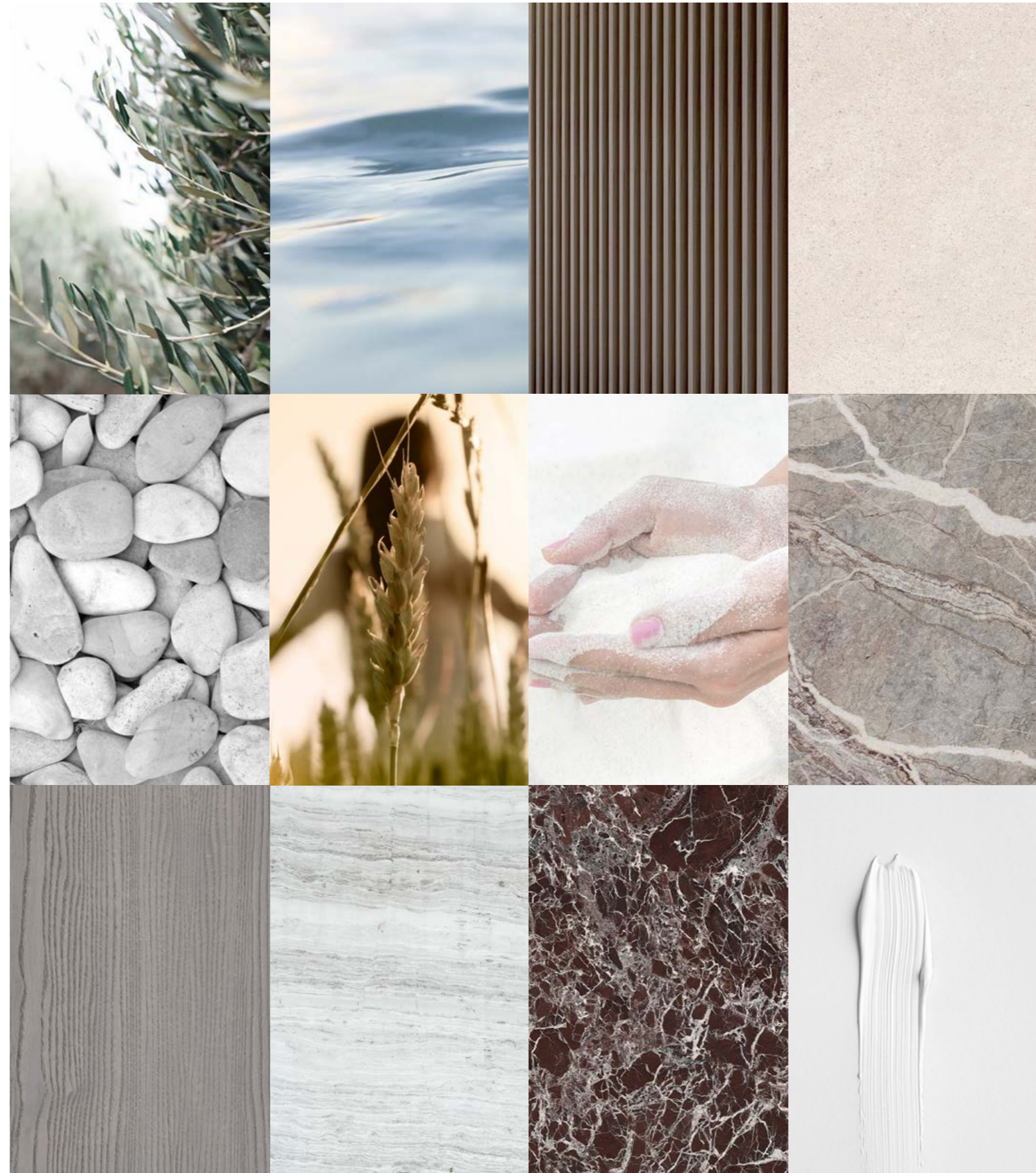
The reflections of the water, dilute the limits, creating a visual effect that invites us to lose ourselves in the beauty of the ephemeral, its music, like a mantra that invites us to relax.

## Exterior palette

Natural stones such as travertine and granite combine with limestones and marbles, cobblestones and gravels to create a grand perpetuity that brings strength to our homes.

Alongside them, we also find wood cladding and natural mortar that emphasise the master lines of each project.

All these elements work hand in hand with the most efficient, rigorous and sustainable systems to create a unique piece.



## Interior palette

At ARK, we believe in the necessary and coherent relationship between interior and exterior.

The same calling that drives us to bring nature and the surrounding environment into the shelter of the home, inevitably leads us to overflow our interiors with natural stone, creating a continuous dialogue.

And, once again, natural woods and wall coverings bring warmth and harmony. With a palette of soft colours with an evident Mediterranean influence accentuated by the wood, by the large windows that let in light and nature, by the soft textures of the carpets and furniture, with these few but outstanding elements, we seek the necessary comfort for the day to day, to live each moment with peace of mind.

# Mediterranean landscape

Heirs to the powerful landscape that surrounds us, the selection of native species is essential for our gardens and courtyards.

For this purpose, we have a wide range of specimens, including olive and cork oak trees, fruit trees, various species of shrubs and grasses.

The brush strokes of colour seem magical among the myriad of continuous and harmonious shades of green that surround, envelop and filter into each of our houses.

Landscaping is also of fundamental importance from the point of view of sustainability. They embrace the warm Mediterranean sun, filtering its light and maintaining a pleasant, almost spring-like temperature all year round.







ARK

# The proposal **plans**

By integrating materials, nature  
and landscape into the architecture,  
the project accomplishes perfect harmony.





# M A S T E R P L A N

Total plot area: 4447,65 sqm

Total project build area: 2300,50 sqm

Orientation: South

Floors: 2

Bedroom Suites 7:

1 Master

4 Suites

1 Guest Suite

1 Staff Suite

Bathrooms & Toilets 9:

1 Master

5 Bathrooms (suites)

1 Staff bathroom

1 SPA bathroom

1 Toilet

Lift

Fireplaces

Swimming pools:

Outdoor Infinity pool

Indoor pool & Spa

Gymnasium

Home office

Garage car spaces:

4 indoor

Wine cellar

\* Furniture not included

# FIRST FLOOR

Interior area	(100%):	663,50 sqm
Covered Terraces	(50% - 34,00 sqm):	17,00 sqm
Uncovered Terraces	(25% - 689,10 sqm):	172,30 sqm
Ceiling height		3 m
Total first floor built area:		852,80 sqm





## G R O U N D F L O O R

Interior area	(100%):	1105,30 sqm
Covered terraces	(50% - 264,40 sqm):	132,20 sqm
Uncovered terraces	(25% - 742,90 sqm):	185,70 sqm
Interior patios	(50% - 43,00 sqm):	21,50 sqm
Ceiling height		3,5 m
<hr/>		
Total ground floor built area:		1447,70 sqm

# Light as a **creator** of spaces





## Interior hall

Crossing the threshold, the hall unfolds as an inner courtyard where materials and views take center stage. Carefully selected stone, wood, and glass interact harmoniously, enhancing the connection between the built space and nature.



Expansive openings frame the surrounding landscape, while natural light, filtered through trellises of leaves and branches, casts ever-changing patterns, enriching the sensory experience.

ARK



## Architecture of light

Light is more than just an element in architecture; it is an intangible substance that shapes, rhythms, and breathes soul into spaces. In VIDA, Manuel Ruiz pays tribute to it, conceiving it not merely as a resource but as the very fabric that upholds the work. Because, at its core, a great part of VIDA is made of light.



ARK

# Immersing indoors

An invitation to immerse oneself  
in the beauty of the indoors to find  
peace in the perfect union between  
man and the surrounding nature.



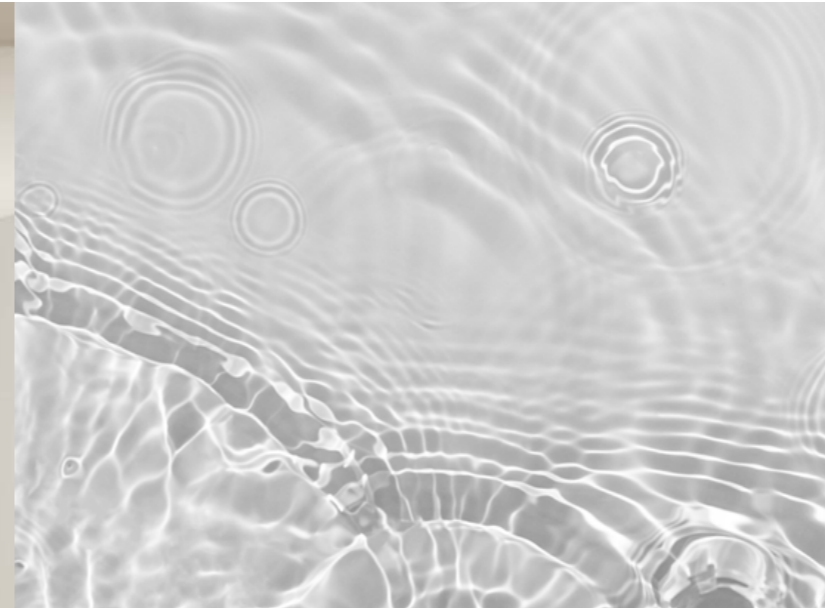
# Living area





ARK

Dissolving  
boundaries



Light, landscape  
& architecture



ARK



ARK



ARK



ARK

# Minimal carpentry



Aluminium joinery and the minimalist sliding system are part of contemporary architecture that seeks perfect harmony between the home and its surroundings. Hi-Finity brings the best without compromise in terms of strength, durability and comfort. Hi-Finity adopts a natural, minimalist design for large enclosures that demand light and elegance.

In addition to the elegance of the design, the contribution to safety is guaranteed in both the joinery and the glass, creating a safe and comfortable environment that your family needs.

An adjustable and patented Reynaers central meeting ensures a perfect fit for high air impermeability. Hi-Finity allows multiple types of opening such as two guides, three guides and central locking solutions, allowing a maximum of six movable glass panels.





“Projects where nature, spaces, natural light and a personal lifestyle are connected to create a sustainable home - this is our commitment.”

Manuel Ruiz Moriche,  
Creative Director ARK Architects

Dining area





"The search for perfection is a never-ending journey, but it is worth it in every bite."

Joan Roca

Main kitchen



ARK

At ARK, we prioritize the design, construction, and refinement of our kitchens.

In today's contemporary living, the kitchen transcends its traditional role, emerging as the focal point of the home—a space for gathering, sharing, and savouring life's moments. It's not just about food; it's about indulging in a holistic sensory experience crafted through meticulous spatial harmony, form, and timing.

From inception, we meticulously craft our kitchens, considering every detail, spatial aspect, and functionality. We integrate state-of-the-art storage, cooking, plumbing, and electrical systems, collaborating with premier brands and skilled artisans in wood and stone.

This harmonious collaboration between our creative team, artisans, leading brands, and premium materials defines ARK kitchens as an unparalleled culinary journey.



ARK has designed a complete home **automation** system.

A house ready for the future because it has been designed to meet your new needs, even the most unusual ones.



A system that allows you to control and activate the entire electrical system, and turn the various machines on and off whenever you want with an easy-to-use remote control.

A fully automated indoor life. Its ease of use and usefulness make the online house a dream for those who wish to buy a home.



ARK

# Sober inner beauty

Our guideline is to build outside standardisation and preconceived ideas, prioritising creativity and changing the rules to achieve an architecture outside the established limits.



Minimalist door design is integral to contemporary architecture. We've conceptualized distinctive doors for this residence to foster harmony within each interior space. The concept involves concealing the door and other visually impactful elements within the walls, aiming for seamless spatial continuity. Our pursuit is to evoke the enchantment of minimalist environments, simultaneously warm and inviting.

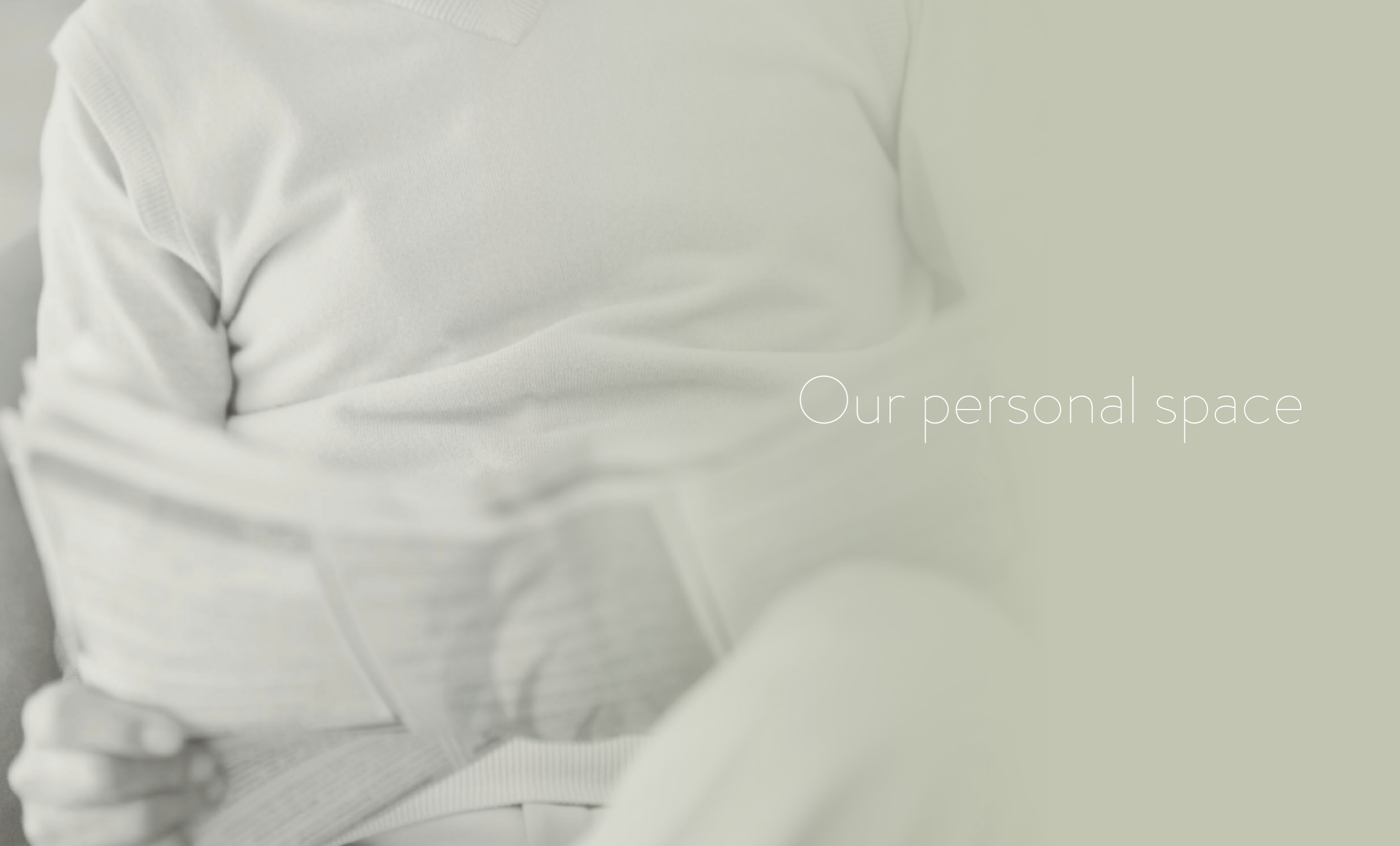


Interior sliding doors in wood/glass material with swing control system.

By integrating frosted glass into the design, we create a new space with additional privacy while allowing natural light to pass between the two zones.



Sliding glass doors with integrated vertical bars are applied to the face of the glass, creating an effect of lines for a contemporary design. Our aim is to design architecture that is not standardised but creative, challenging conventional responses to free building uses from artificial constraints.



Our personal space

Master suite



## Master suite

Designed with meticulous attention to detail, it invites you to immerse yourself in a world of tranquillity and comfort, where everyday actions become rituals of connection with yourself and the surrounding nature.



# D a i l y r i t u a l

Every detail, from the natural materials, the interior light, to the views, is carefully designed to enrich the experience and nourish the soul.



# Master bathroom



V  
I  
D  
A  
120

V  
I  
D  
A  
121



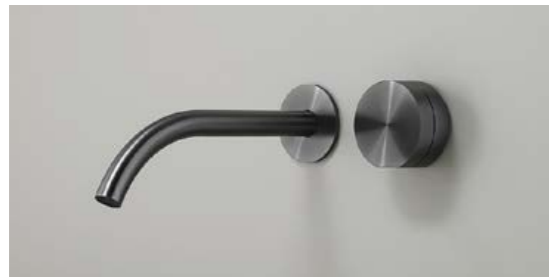
ARK

# Master bathroom qualities

Bathroom furniture from leading brands.

The design depends on the interior design phase.

Minimalist worktop taps.



Free-standing mixer for bathtub with cylindrical hand shower.



Intelligent care, every detail of the innovative shower toilet has been thought out in protocols to provide you with a high level of hygiene at all times. You can enjoy perfect cleanliness thanks to its flexible nozzles and unlimited hot water.



The bathroom fixtures are curated from premier brands in the industry, offering a range of models, finishes, and accessories meticulously selected by our seasoned team during the interior design phase. This impeccable selection harmonizes seamlessly with the exclusivity embodied in ARK Design creations.



Handcrafted marble bathtub by ARK Design.



# Closet suite for master bedroom

Wood and melamine cabinets feature drawer modules equipped with horizontal and vertical shelves, sliding metal runners, skirts, and stainless steel bars for hanging clothes. LED lights provide interior illumination.

Our dedicated interior design team meticulously crafts each wardrobe, tailoring every aspect to fulfill your specific requirements.



Harmony  
in each space

V  
I  
D  
E  
O  
124



ARK



Time for creativity



ARK spaces inspire creativity and innovation through natural surroundings and panoramic views. With seamless connectivity and state-of-the-art infrastructure, ideas flow freely in a barrier-free workspace fully connected to the world's latest technologies.



ARK

# Smart home

Control the temperature to know the state of your garden.

The technology of home automation systems makes this a smart villa for the comfort of its owners.

All functions under control, on the go.

Automation system with integrated THINKKNX software installed to control all home automation functions of the villa.

The software is compatible with smartphones.



thinkknx

# Automation system

Lighting control on-off with regulation. Lighting in passageways by presence control. Lighting scenes control. Air conditioning control. Underfloor heating control. Shades, blinds and rolling shutters control. House access control. Control from screens, touch panels and smartphones. Main colour touch screen at the entrance. CCTV system and automatic control access to the house interconnected. Remote access to the house from any android or IOS platform device. Installation of Ethernet sockets in all rooms. Installation of wifi repeaters DUAL BAND 2G /5G. Audio control.



# Audio system

There will be speakers in each room that will be automated to control music through the Spotify app/Sonos settings. SONOS Connect Amp amplifier. BOSE Freespace outdoor floorstanding speakers.

Bowers & Wilkins

**SONOS**

**BOSE**

ARK

# Downstairs



Revitalising breaks

ARK

Wellness area



ARK



In this sanctuary, time stands still, allowing the senses  
to awaken and the mind to find calm



ARK



Wellness area



Gym

ARK

# Gym equipment



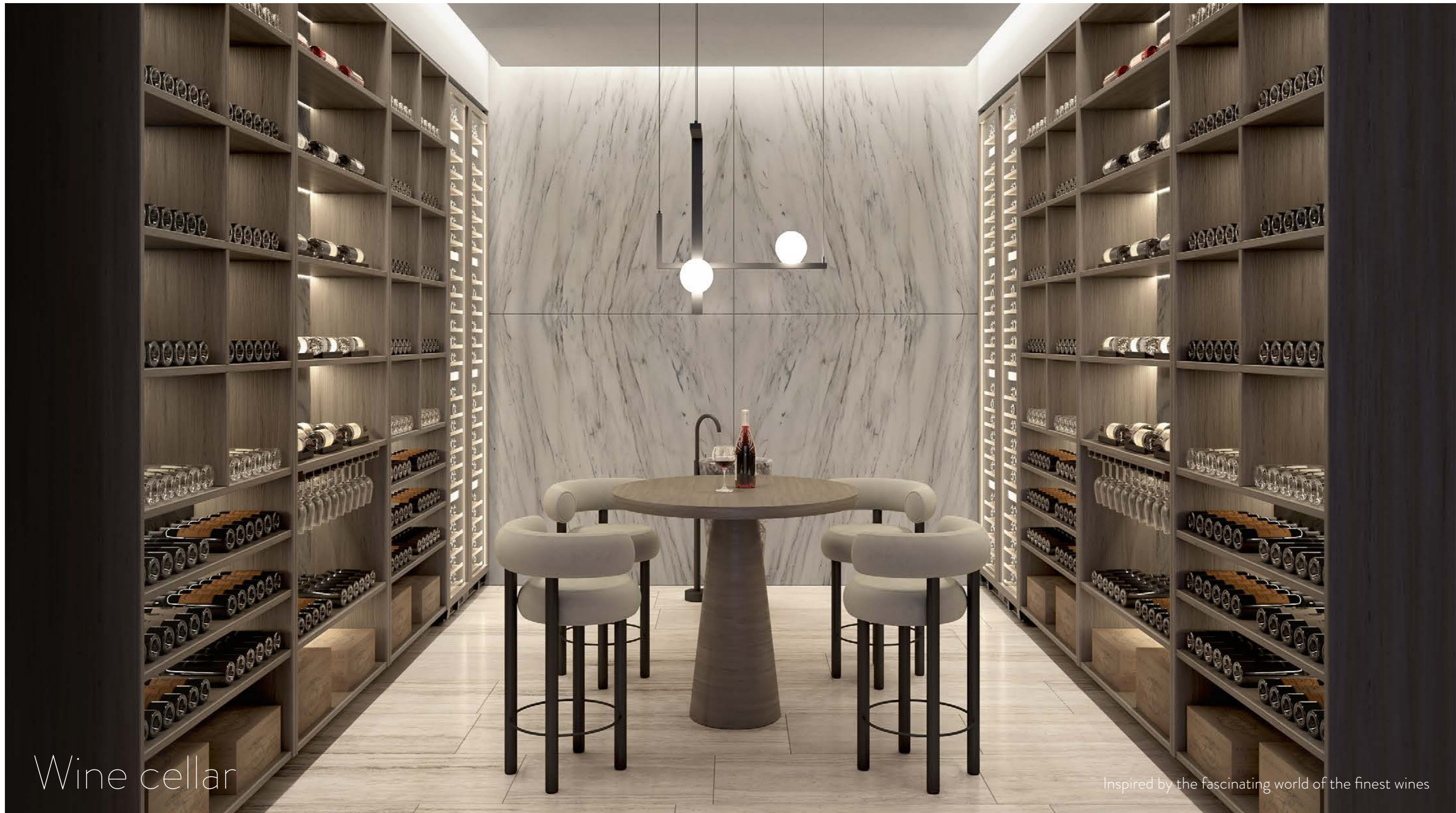
V  
I  
D  
E  
O  
138

The  
Healthy  
way

The interior walls feature natural wood slats mounted on 15 mm thick melamine board with a wood finish, selected during the interior design phase. Floor-to-ceiling mirrors adorn select main walls, complemented by expansive natural wood parquet flooring.



ARK



Wine cellar

Inspired by the fascinating world of the finest wines



ARK

Indoor parking



The place that encourages our hobbies

ARK

SOTOGRAÑDE®  
ANDALUCÍA

ARK

We Design & Build your Dreams

**Sotogrande. Extraordinary by Nature.**

DISCLAIMER. This book is meant only for promotional purposes and cannot be construed as a binding legal document. The plans, specifications, images and other details herein are only indicative and subject, among others, to the approval of the relevant authorities. The Developer / Owner reserves the right to make additions, deletions, alterations or amendments as and when it deems fit and proper, without prior notice. Artists' impressions and interior design used in the flat/unit plans and images, including all furniture, fixtures, items, electronic goods, amenities, accessories etc., are used for illustration purposes. The Developer / Owner is not liable / required to provide any furniture, items, electronic goods, amenities, accessories etc. as displayed in the plans and images. This book does not constitute an offer and/or contract of any type between the Developer / Owner and the recipient. The relationship between the Developer / Owner and the actual customers will be governed strictly by the written agreements to be executed from time to time and not on the terms of this book.



